



High aesthetic solutions

ACCESSORIES

- 05 Lapidated Crystals
- 06 Painless
- 07 Power Block
- 08 Power Plac

CEMENTS

- 09 Natures Try-in
- 09 Natures Veneer

BLEACHING MATERIALS

- 11 Power Bleaching Home
- 12 Power Bleaching Home with Scent
- 13 Power Bleaching 37% Office

RESINS

- 15 Zirconflo
- 17 Zirconfill



Maquira: much more than 20 years of history

Maquira was founded 20 years ago, but our story began much earlier. In 1976, before I was even born, my father started selling dental products, so I grew up and worked in the world of dental products. Studying and analyzing market needs and opportunities, in 2000 I started producing what would be Maquira's first product: the retainer case.

Since then, Maquira has grown steadily until we became Maquira Dental Group: a group with four brands and more than 450 products. Our daily commitment is to focus on the essentials: offering a complete portfolio, delivering the best dental solutions and serving all our customers with excellence. We constantly invest in the development of new products, technology and expansion to become the largest company in Latin America in digital solutions, biomaterials and dental consumables.

Inspiring healthy smiles

Our purpose is to inspire healthy smiles. We have in mind what we want to contribute and, to achieve this, the Maquira, Makertech, Hemospon and BM4 brands have complete lines of solutions in consumables, digital dentistry, biomaterials, composites and high esthetics. Maquira Dental Group's manufacturing facilities are always growing so that we can develop and produce innovative products that will meet the growing needs of the market. From accessories to 3D printing, we not only seek innovation, but remain committed to providing safe, effective and high-quality products.



Antonio Leme Junior
Founder and CEO

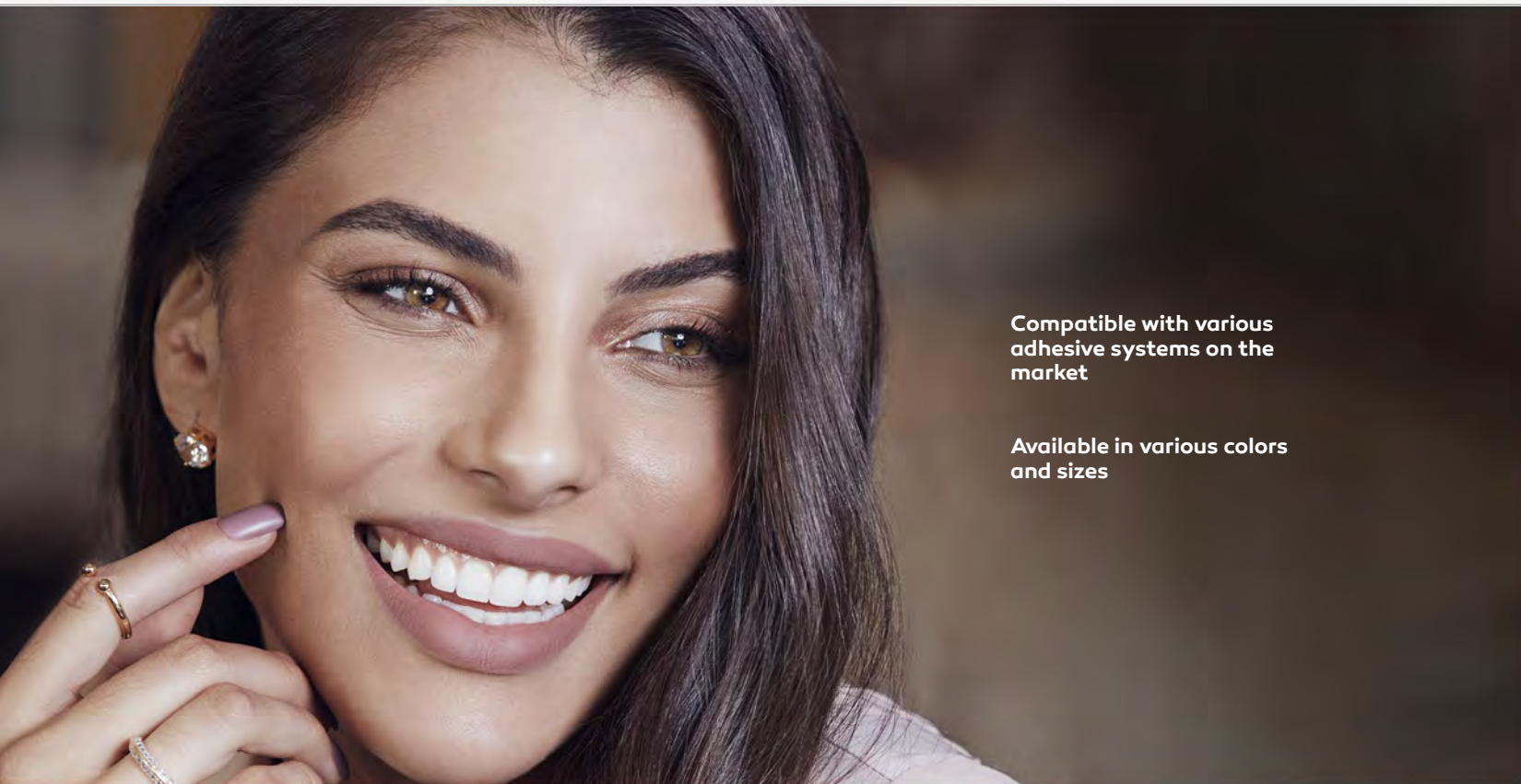


Lapidated Crystals

Small lapidated glass crystals for use in dental esthetics

Indication:

Lapidated crystals are indicated for aesthetic piercing of tooth surfaces.



Compatible with various adhesive systems on the market

Available in various colors and sizes

Presentations: • Lapidated Crystals No. 3 - 10 units
• Assorted Lapidated Crystals - 10 units



Painless

Desensitizing gel

1,5%

5%

Painless is a desensitizing gel based on potassium oxalate for the treatment of dentin hypersensitivity.

With its exclusive formula, Painless is the most versatile desensitizer currently available on the market. Its use protocol is varied and can be used to treat hypersensitivity resulting from thermal, physical, osmotic and chemical stimuli.



It contains an exclusive formula with potassium oxalate, the most effective desensitizing agent on the market.

Contains sodium fluoride, which helps remineralize tooth enamel during treatment.

It provides greater safety, does not interfere with the homeostasis of the pulp and does not discolour the tooth or mucosa.

Available in versions:
• 1.5% - Home use
• 5% - Professional use

Presentations: • Painless 1,5% | Painless 5%
1 Syringe with 3 g and 1 tip

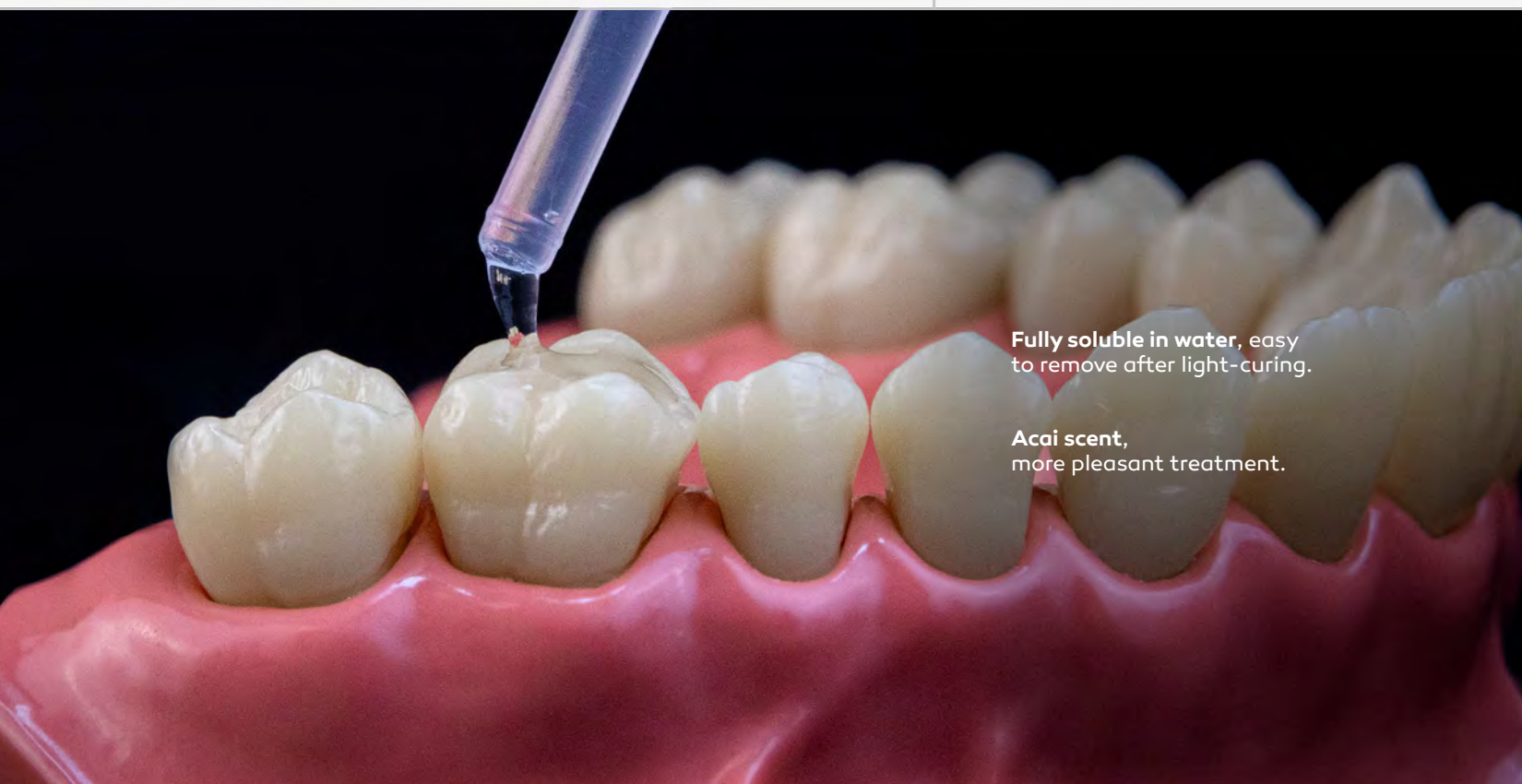


Power Block

Water-soluble oxygen-blocking gel

Indication:

Power Block is a flavored glycerin gel, lubricant, and impermeable to oxygen that avoids contact of the composite resins and resin cement with the oxygen (to avoid polymerization with the oxygen) and lubricates retraction cords.



Fully soluble in water, easy to remove after light-curing.

Acai scent, more pleasant treatment.

Presentation: • 3 Syringes with 3 g and 3 tips



Power Plac

EVA plates for bleaching

Indication:

Power Plac is indicated for use in vacuum plasticizers by dental professionals for the purpose of making dental trays. Available in square or round options.



Excellent flexibility, it has an elastic memory system, making it more flexible.

Biocompatible plate, does not cause irritation when in contact with the body.

100% EVA: waterproof, resistant and more durable

Dimensions:
• Square: 135 x 135 mm
• Round: 135 mm
• Thickness: 1 mm

Presentations: • Power Plac round | Power Plac square
Pack with 5 or 10 plates



Natures Try-in & Veneer

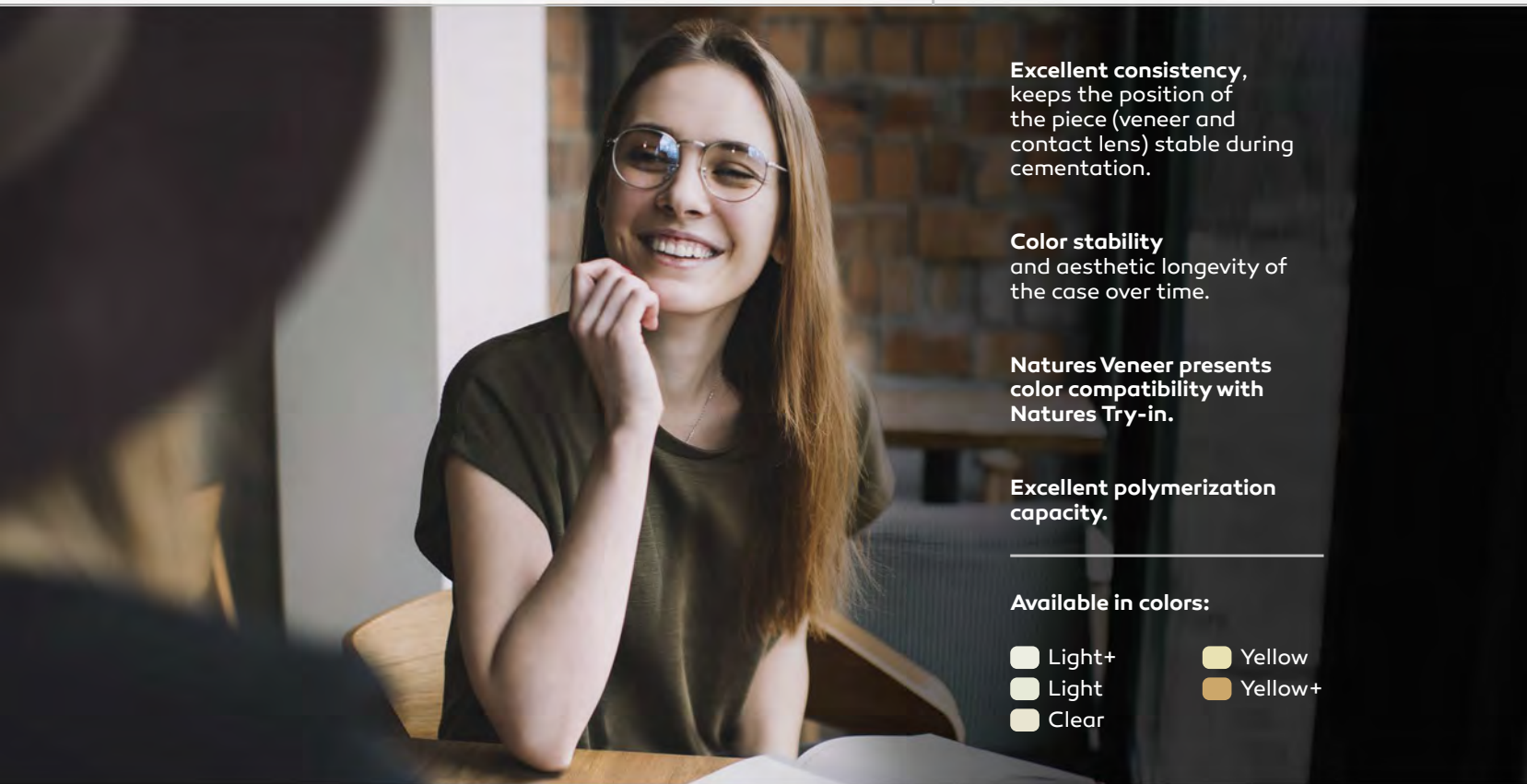
Light-cured resin cement and test material for cementation

Natures Try-in:

Product used so that the professional can test the color and adaptation of the prosthetic piece before definitive cementation, allowing an early view of the final result.

Natures Veneer:

Light-curing resin cement is indicated for cementation of “dental contact lenses” and indirect veneers that do not have an opaque infrastructure.



Excellent consistency, keeps the position of the piece (veneer and contact lens) stable during cementation.

Color stability and aesthetic longevity of the case over time.

Natures Veneer presents color compatibility with Natures Try-in.

Excellent polymerization capacity.

Available in colors:

- Light+
- Light
- Clear
- Yellow
- Yellow+

- Presentations:**
- Natures Veneer | Natures Try-in:
1 Syringe with 2 g and 5 tips
 - Kit: 3 Syringes of Natures Veneer with 2 g each,
3 syringes of Natures Try-in with 2 g each and 6 tips.



NATURES VENEER: ANVISA REG. No.: 80322400107
NATURES TRY-IN: ANVISA REG. No.: 80322400105

Transforming the smile with dental contact lenses



Step 1 Patient's initial case, showing pronounced incisal ridges and slight dental malposition



Step 2 Selecting the shade of the future restoration. The patient selected shade BL1



Step 3 Sufficiently invasive dental preparations



Step 4 Cementation test with Natures Try-in Light+



Step 5 Conditioning the ceramic with 10% hydrofluoric acid for 20 seconds



Step 6 Internal cleaning of the part with 37% phosphoric acid for 30 seconds



Step 7 Application of silane to the inner surface of the ceramic



Step 8 Application of adhesive system on the inner surface of the ceramic without photoactivation



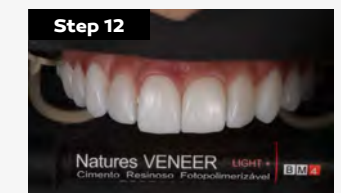
Step 9 Conditioning enamel with 37% phosphoric acid for 30 seconds



Step 10 Application of the adhesive system on dental enamel, without photoactivation



Step 101 Insertion of Natures Veneer Light+ resin cement into the ceramic and positioning of the tooth



Step 12 Cemented ceramic contact lenses

Power Bleaching Home

Teeth bleaching gel for home use



Indication:

Power Bleaching is intended for teeth whitening in the following cases:

Vital teeth:

Naturally dark or yellowish, darkened by dyes, age, trauma, stained to a mild degree by tetracycline and by fluorosis.

Non-vital teeth:

In association with internal tooth whitening.

Power Bleaching Home Scents

Teeth bleaching gel for home use



Indication:

Power Bleaching is intended for teeth whitening in the following cases:

Vital teeth:

Naturally dark or yellowish, darkened by dyes, age, trauma, stained to a mild degree by tetracycline and by fluorosis.

Non-vital teeth:

In association with internal tooth whitening.

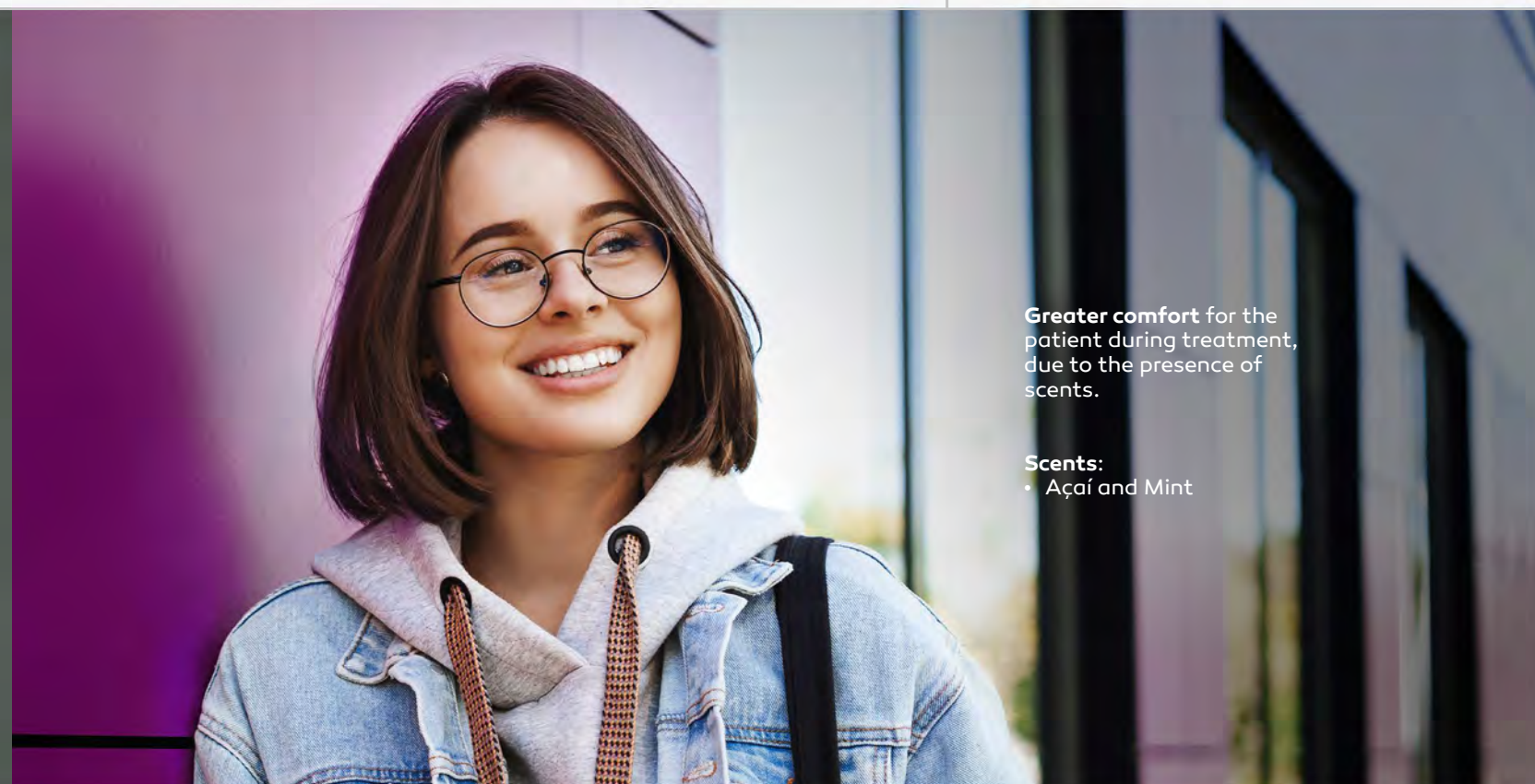


It contains an exclusive formula with potassium oxalate, the most effective desensitizing agent on the market.

Neutral pH, even during treatment

Excellent consistency, greater safety and higher yield per syringe.

Greater yield, the syringe can be used several times even after opening, as long as it is within the expiration date and in suitable storage conditions.



Greater comfort for the patient during treatment, due to the presence of scents.

Scents:
• Açai and Mint

Presentations: • Power Bleaching 10%, 16% and 22%:
1 syringe, 5 syringes or 7 syringes

Presentations contents:

- 1 Syringe with 3 g and 1 tip
- 5 Syringes with 3 g, 5 tips, 1 holder tray and 2 EVA plates
- 7 Syringes with 3 g, 7 tips, 1 holder tray and 2 EVA plates



Presentations: • Açai - Power Bleaching 16% and 22%:
1 syringe, 5 syringe or 7 syringes
• Mint - Power Bleaching 10%, 16% and 22%:
1 syringe, 5 syringe or 7 syringes

Presentations contents:

- 1 Syringe with 3 g and 1 tip
- 5 Syringes with 3 g, 5 tips, 1 holder tray and 2 EVA plates
- 7 Syringes with 3 g, 7 tips, 1 holder tray and 2 EVA plates



Power Bleaching 37% Office

Office bleaching gel

Indication:

Power Bleaching 37% Office is intended for teeth whitening in the following cases:

Vital teeth:

Naturally dark or yellowish, darkened by dyes, age, trauma, stained to a mild degree by tetracycline and by fluorosis.

Non-vital teeth:

In association with internal tooth whitening.



Practical, ready to use and does not need to be activated.

pH close to neutral.

- Presentations:**
- 1 Syringe with 3 g and 1 tip
 - 3 Syringes with 3 g each and 3 tips



The difference is in the details:

Discover the complete line of teeth whitening products that take smiles to a new level

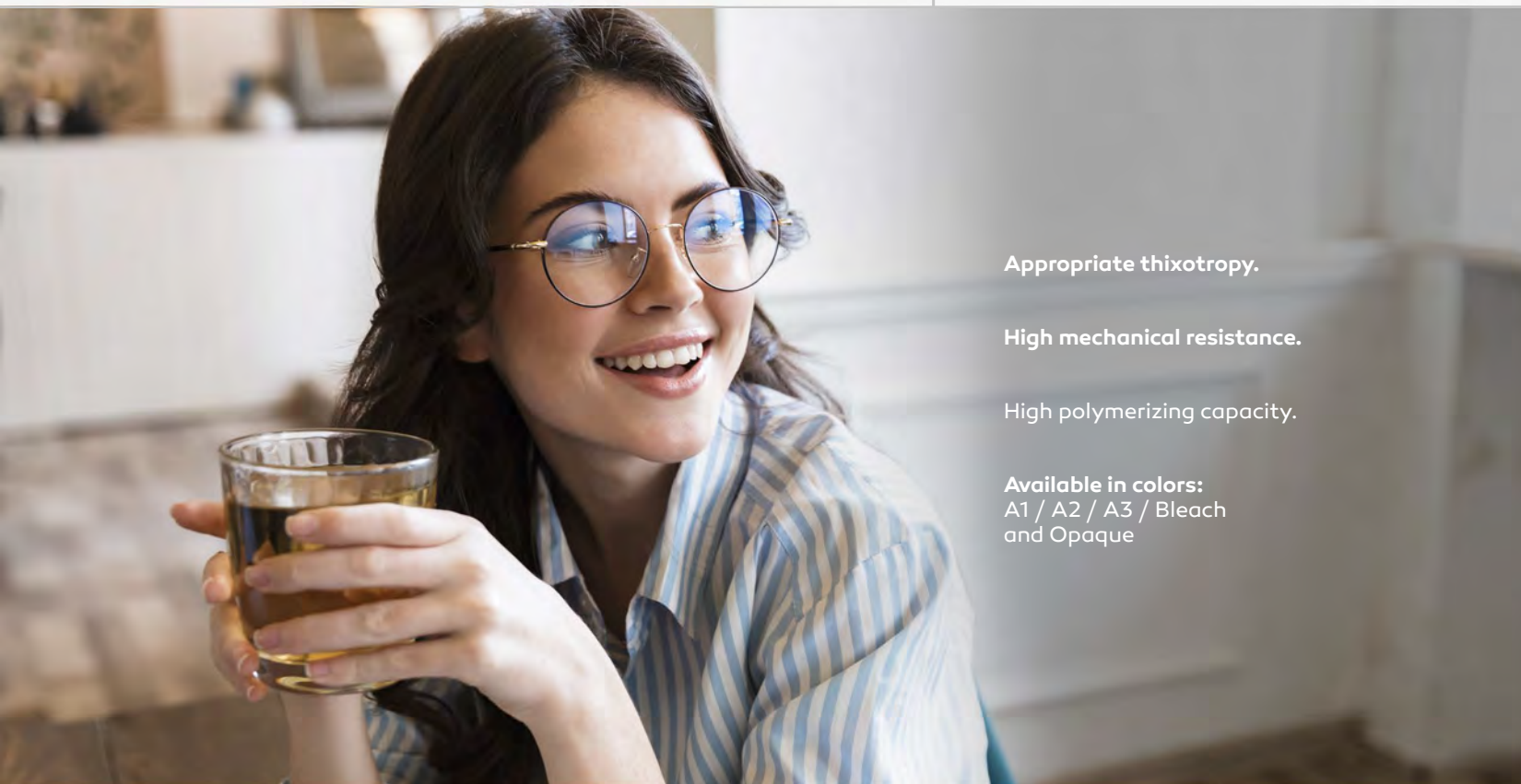
Visit our website and discover our complete product line: www.bm4.com.br

Zirconflow

Low viscosity light-cured composite resin

Indication:

- Restoration of non-invasive preparations;
- Sealing fossils and fissures;
- Base/strengthening under direct restorations;
- Class I, III, and V restorations (including small class I restorations not subject to tension);
- Tunnel preparation;
- Repair of enamel defects;
- Restorations of deciduous teeth;
- Bonding of dental fragments;
- Composite resin repair;
- Non-cariou cervical lesions;
- Planning preparation walls.



Appropriate thixotropy.

High mechanical resistance.

High polymerizing capacity.

Available in colors:
A1 / A2 / A3 / Bleach
and Opaque

Presentation: • 1 Syringe with 4 g and 10 tips



The missing ally in your dental clinic



Step 1
Keep the operating field free of contamination. Wash and dry the tooth surface



Step 2
Acid etch according to product instructions



Step 3
Apply the adhesive system according to the material's recommendations



Step 4
Light-cure the material for 20 seconds



Step 5
Apply Zirconflow directly to the cavity. Each layer should be no thicker than 2 mm



Step 6
Light-cure each layer for 20 seconds



Step 7
Check occlusion with registration paper



Step 8
Finishing with instruments of the professional's choice

Zirconfill

Light-cured nanohybrid composite resin

Zirconfill is a light-curing, radiopaque nanohybrid composite resin developed for restorations for anterior and posterior teeth with a high inorganic filler content, mainly made up of zirconia/silica particles.

Indication:

- Direct restorations of all classes (I, II, III, IV, and V);
- Aesthetic corrections;
- Direct veneers in composite resin;
- Bonding of tooth fragments and indirect restorations (inlays and onlays);
- Preparation of core fillings;
- Stabilization of anterior teeth.

Ideal consistency: high performance and thixotropy.

Superior mechanical properties: the mixed zirconia/silica filler allows Zirconfill's mechanical properties to be superior.

Nano-sized particles, better polishing ability with long-lasting maintenance and excellent surface smoothness.

Available in colors:

- DA2 | DA3 | DA3,5 | DA4
- DB1 | D-BLEACH
- E BLEACH-H | EA1 | EA2
- EA3 | EA3,5 | EA4 | EB1
- EB3 | EC2 | EC3 | OA3
- T BLUE | T NEUTRAL

Presentation: • 1 Syringe with 4 g



BM4 products, **the key to extraordinary results** in your procedures